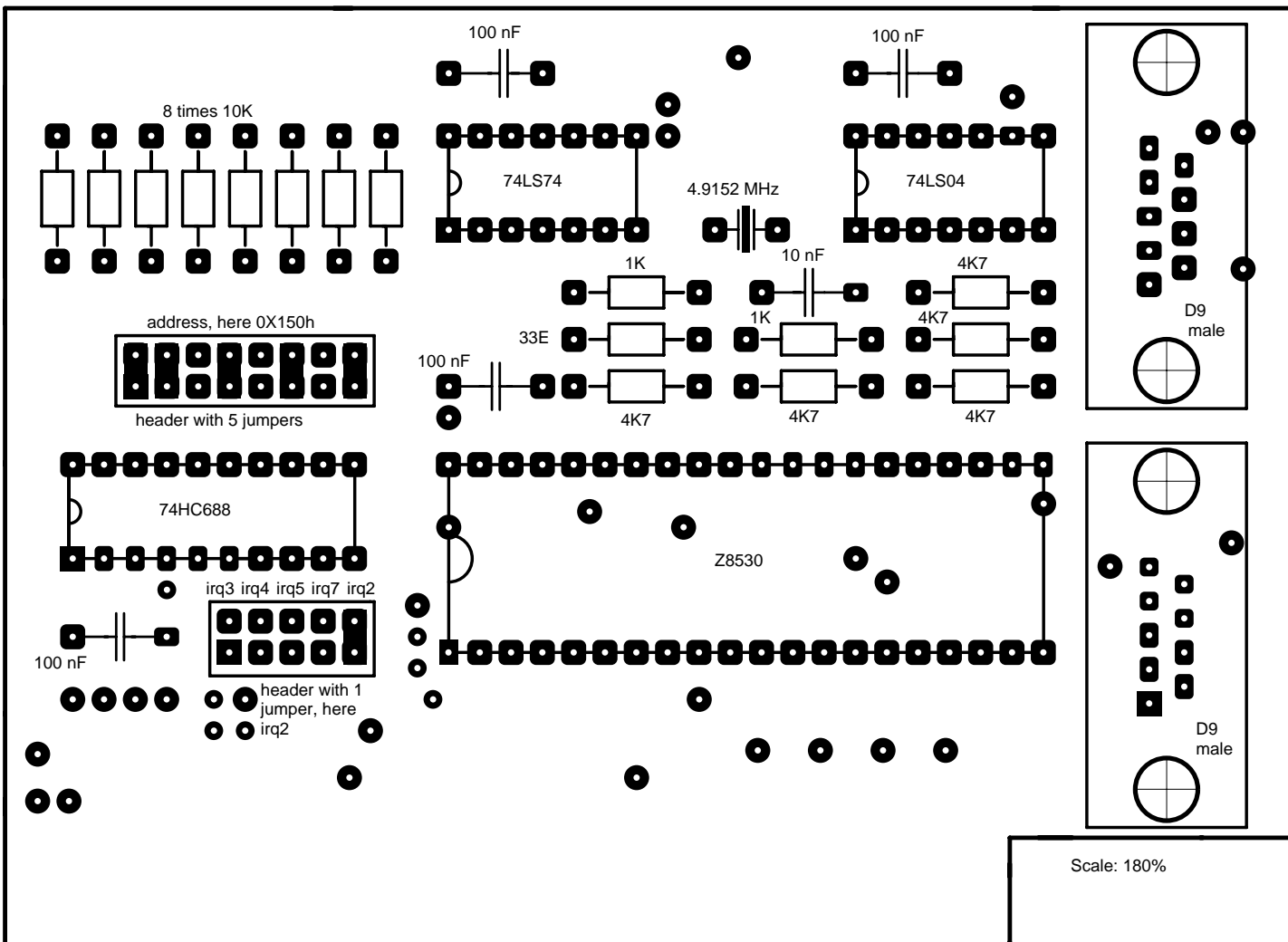


Component placement SCC card:



Solder pads both on top and bottom side of pcb.

Round pads are vias: To make contact between both pcb sides.

Use ic contacts that can be soldered on both sides of pcb.

Extra info: See PE1PET scc card.

Packet-radio: PA3GCO@PI8SHB.

E-mail: pa3gco@amsat.org